

The fast track to property assets efficiencies: a Network Rail case study

How to enhance business performance and reduce costs

A key event for any organisation that believes good property asset management is critical to a successful business

What's it about?

Network Rail has an extensive, nationwide property estate that ranges from large listed stations to small line-side sheds. In addition, since privatisation, the number of agencies working with Network Rail to manage their property assets has increased to include the Train Operating Companies and a plethora of contractors and suppliers.

This case study addresses the complexities of a vast estate and a mix of agencies. It explains how an integrated, systematic approach to property asset management can help enhance performance and reduce costs.

Who should attend?

Directors, Senior Managers and other key strategic decision makers focused on achieving enhanced business performance and cost savings through the optimisation of property assets

Who's speaking?

Jonathan Goring – Managing Director, Capita Symonds
Adam Checkley – Route Asset Manager (Buildings), Wales Route, Network Rail
Peter Strangeway – Managing Director, e2e Consulting Ltd (Asset Management Team, Abellio)
Liam Harkin – Principal Building Surveyor, Amey
Terry Pitt – Product Manager, Atrium
The event is chaired by **Anita Barrett** – Managing Director, Atrium

When and where is it?

Thursday 29th March 2012 – Siemens Room, Institution of Engineering & Technology, 2 Savoy Place, London WC2R 0BL

How do you register?

Visit the PAM Event registration page at www.atriumsoft.com, or contact the events team by calling **01225 822089** or emailing info@pam-events.com

How much does it cost?

This event is **free of charge** – but numbers are limited, so please register quickly, and ideally no later than Friday 23rd March

Who's the sponsor?

This Property Asset Management (PAM) Event, the fourth in a series of annual events, is sponsored by Atrium Software Ltd

Thursday 29th March 2012 – IET, London

9.00am to 1.30pm – A free half day event with breakfast & lunch (speaker sessions from 9.30am to 12.30pm)

Siemens Room, Institution of Engineering & Technology, 2 Savoy Place, London WC2R 0BL

- Keynote speaker – Jonathan Goring (Capita Symonds)
- Case study presentations from Adam Checkley (Network Rail), Peter Strangeway (e2e Consulting) and Liam Harkin (Amey)

PROGRAMME

- 9.00 Continental Breakfast and Registration**
- 9.30 Welcome & Introductions** – Anita Barrett (Atrium) – Event Chair
- 9.45 Keynote speech: The importance of property asset management for capital intensive organisations**
Setting the scene, Jonathan will highlight the importance of strategic property asset management for capital intensive organisations
- 10.00 Strategic property asset management for a complex estate** – Adam Checkley (Network Rail)
Adam reflects on Network Rail's journey in developing an integrated, strategic approach to the management of major property assets, outlining some of the important lessons learned and offering some thoughts for the future
- 10.45 Collaborative working** – Peter Strangeway (e2e Consulting)
Peter's presentation concentrates on the challenges and opportunities of managing and sharing information to deliver the optimal property estate
- 11.15 Break – tea & coffee**
- 11.30 Managing the country's largest condition assessment** – Liam Harkin (Amey)
Liam discusses the issues and lessons learned while carrying out, on behalf of Network Rail, what is believed to be the country's largest condition assessment
- 12.00 Closing remarks: The solution is integration** – Terry Pitt (Atrium)
Terry describes how all the information collected and maintained by so many different agencies for such a complex estate can be brought together to provide key operational and strategic management information
- 12.30 Q&A session** – questions not already covered in each speaker session
- 12.45 Lunch**
- 1.30-3.00** *Members of the panel are happy to discuss issues in more detail should any delegates wish to stay on after lunch*

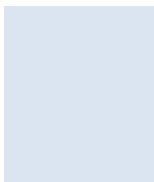
The fast track to property asset efficiencies: a Network Rail case study

An opportunity to meet a range of high profile speakers, many of whom have been directly involved with Network Rail's capital asset investment planning work.



Jonathan Goring – Managing Director, Capita Symonds

During his career Jonathan has delivered notable business success and facilitated solutions in complex environments for a variety of clients from Sub Saharan African states to British local and central government agencies. He has main board experience in the construction, outsourcing, hotel and leisure sectors, and has worked on business change programmes for private sector organisations, with responsibility for implementing people, IT and project delivery processes.



Adam Checkley – Route Asset Manager, Network Rail

Adam is a Chartered Building Surveyor with over 10 years' extensive experience in railway property management. He worked for Virgin Trains managing their tenanted estate before moving to Mouchel as Divisional Manager for their Rail business. For the last 4 years he has worked within Network Rail's asset management team. He is currently Route Asset Manager (Buildings) for the newly created Wales Route, responsible for all operational property assets in Wales.



Peter Strangeway – Managing Director, e2e Consulting Ltd (Abellio)

Peter is a Chartered Engineer with over 30 years' experience in project and facilities management. He has held senior roles in public and private sector organisations including the Property Services Agency, NatWest Bank and Network Rail. As a freelance consultant working for the Train Operating Company, Abellio, Peter authored their stations plan for Greater Anglia and is currently managing the mobilisation of Abellio's Asset Management function.



Liam Harkin – Principal Building Surveyor, Amey

Liam is a member of both CIOB and IAM. Having spent many years in the construction industry, he entered the surveying profession in 1994 and embarked on a career within the rail industry working for a variety of employers including Serco, Parkman, Mouchel and Amey. Liam has national responsibility for training and quality management of Amey's surveying team on the Civil Engineering Framework Agreement (CEFA) which Amey operates for Network Rail.



Terry Pitt – Product Manager, Atrium Software

Terry is a Chartered Surveyor and has an MSc in Construction Economics and Management. He designed one of the first computerised asset management systems in 1983, and co-authored the first RICS Stock Condition Survey Guidance in 1994. He spent 4 years at UWE overseeing asset management research projects, then 10 years as an asset management consultant, before re-joining Atrium in 2008, the company he co-founded some 20 years ago.

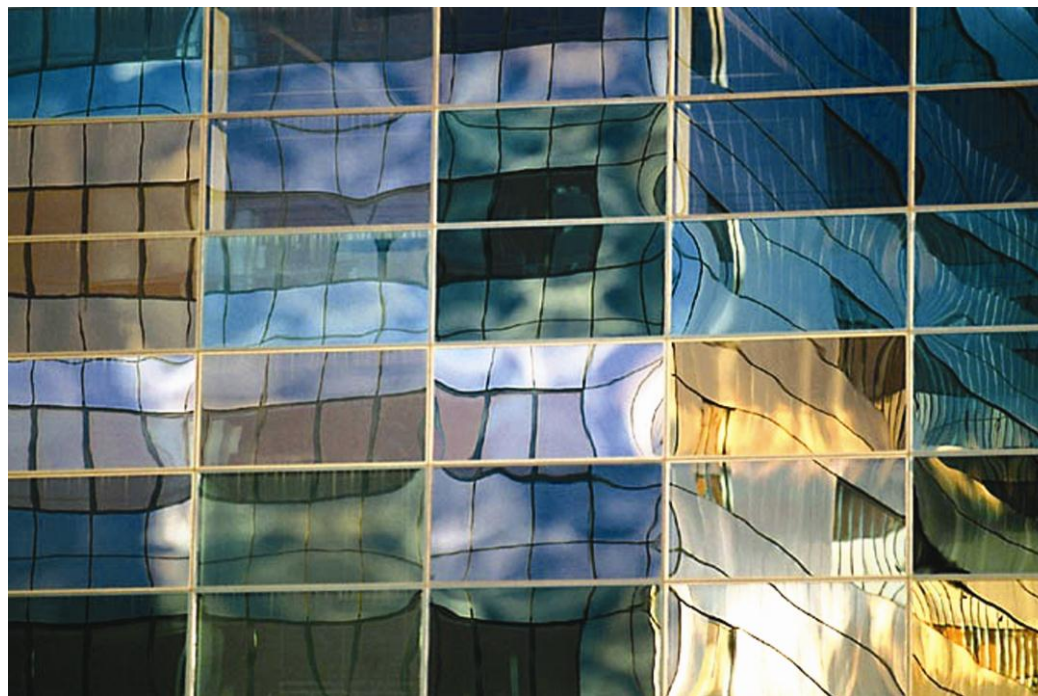


Event Chair: Anita Barrett – Managing Director, Atrium Software

Anita has over 18 years' experience successfully implementing property asset management solutions, and negotiated the contracts for both the Network Rail and Ministry of Justice projects. Whilst introducing the company to structured, quality assured customer services, she has also overseen the consolidation and growth of Atrium's property asset management software business and the development of the company's innovative Enterprise Asset Management (EAM) suite.

The fast track to property asset efficiencies: a Network Rail case study

A key event for any organisation that believes good property asset management is critical to a successful business



Thursday 29th March 2012 – IET, London

**A free half day event with breakfast and lunch
Speaker sessions from 9.30am to 12.30pm**

*A Property Asset Management (PAM) Event
sponsored by Atrium Software Ltd
www.atriumsoft.com 01275 814333*